

## Year-End Giving

It's not too soon  
to plan your giving!

To make a contribution to Wooddale Church:

**Online** at [wooddale.onlinegiving.org](http://wooddale.onlinegiving.org)

**Text** "give" to 952.333.4353

**In Person** during the service as the offering plate passes

We also accept stock and mutual fund contributions.  
Call our accounting office to learn more at 952-944-6300.

## Connect

Learn more about  
Wooddale Church and  
take your next step  
to get connected.

**Eden Prairie** 11 am | Room 132

**Edina** 11:45 am | Lydia's Café

**Loring Park** 11:15 am | Lobby

December 2

Register at [wooddale.org](http://wooddale.org)

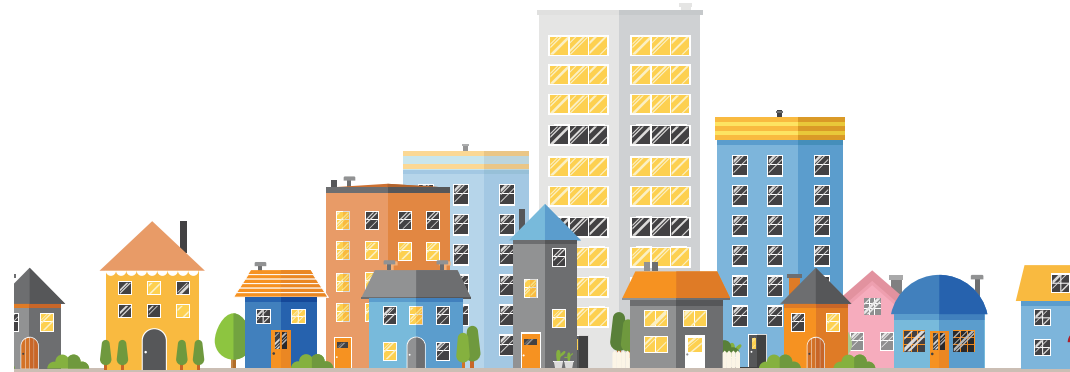


**WE ARE  
FOR**  
*Serving Others*

Changing our  
community  
one neighbor  
at a time

Visit [wearefor.com/serve](http://wearefor.com/serve) to learn more

# Won't You Be My Neighbor?



*This  
November*



# Welcome to Wooddale Church!

## We're so glad you're here.

If this is your first visit, we have a gift to say thanks for being our guest today. Please fill out a Connection Card and take it to a volunteer in the common area as you leave the service. We'd love to meet you!

Our Connections Team is here to answer your questions and help guide you to your next step in getting to know our community. Look for volunteers wearing blue lanyards or stop by one of our **Welcome Centers**.

### What's Happening at Wooddale

For a full schedule of events and activities, please visit [wooddale.org/calendar](http://wooddale.org/calendar).



[lydiascoffee.com](http://lydiascoffee.com)

#### Eden Prairie

**MONDAY** 7 am - 2 pm, 4:30 - 7 pm

**TUESDAY** 7 am - 2 pm, 4:30 - 7 pm

**WEDNESDAY** 7 am - 2 pm, 4:30 - 8 pm

**THURSDAY** 7 am - 2 pm

**FRIDAY** Closed

**SATURDAY** 7 - 11 am, 4 - 7 pm

**SUNDAY** 7 am - 1 pm

Lydia's coffee is also available around service times at our Edina and Loring Park campuses.

### Need Prayer?

Volunteers are available to pray for you after each service. We invite you to come to the front to meet with a prayer team member.

You may also submit prayer requests and pray for others in our community at [wooddale.org/prayer](http://wooddale.org/prayer).

### Missed a Service?

If you weren't able to join us, you may view past sermons at [wooddale.org/sermon-archive](http://wooddale.org/sermon-archive).

You can worship through giving at [wooddale.org/give-online](http://wooddale.org/give-online).

### Get involved

Check out ways to get involved at [wooddale.org/get-involved](http://wooddale.org/get-involved).

For a list of job openings at Wooddale Church, go to [wooddale.org/employment](http://wooddale.org/employment).

## Thanksgiving Eve Service

Eden Prairie Campus  
Great Room

Join us for a time of worship and sharing what we're thankful for!

**November 21**  
**7-8 pm**



### Lydia's Coffeehouse Serving Opportunity

Share a smile and a cup of our privately blended coffee with our guests this holiday season. If you're interested in serving with the Lydia's team at our Eden Prairie campus, [please contact Deneena at deneena.hughes@wooddale.org](mailto:deneena.hughes@wooddale.org).

### The Gathering

Join us on Sunday nights at 6 pm in the Great Room at our Eden Prairie campus for contemporary worship and a service with a more intimate feel. Afterwards 20- and 30-somethings are invited to hang out with Young Adult Connect in the lobby with free coffee and sweets.

### Senior High Groups

All students grades 10-12 are invited to join us for great music, relevant teaching and a chance to connect with other students on Wednesdays from 6:30 to 8 pm at our Eden Prairie campus or Sundays from 6:30 to 8 pm at our Edina campus. [Go to wooddale.org/senior-high](http://wooddale.org/senior-high) to learn more.

### Friday Frenzy for Grades 5-6

This is the place to bring your friends from school on Friday, Dec 7! Invite a friend and come to our Eden Prairie campus for pizza, beverages and games from 6 to 8 pm. Five dollars at the door. [No RSVP required.](#)

## Adopt 7 Each One, Reach One

As we head into the holiday season, we encourage you to keep praying for 7 neighbors, friends or coworkers to have their hearts opened toward Jesus.

Invite them to join you for a Christmas event at Wooddale this year!

