

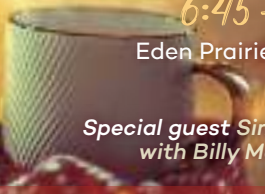
Women's

Friday, November 30

6:45 - 9 pm

Eden Prairie campus

# Christmas Coffeehouse



Special guest Simple Gifts with Billy McLaughlin

Invite friends, family and neighbors to kick off the Christmas season with great music, treats, hot drinks and quality time with other women.

Get tickets at [wooddale.tix.com](http://wooddale.tix.com)

# Christmas Eve at Wooddale Church

Eden Prairie

**Early Service** December 18 at 7 pm

December 24 at 11 am, 12:30, 2, 3:30 and 5 pm

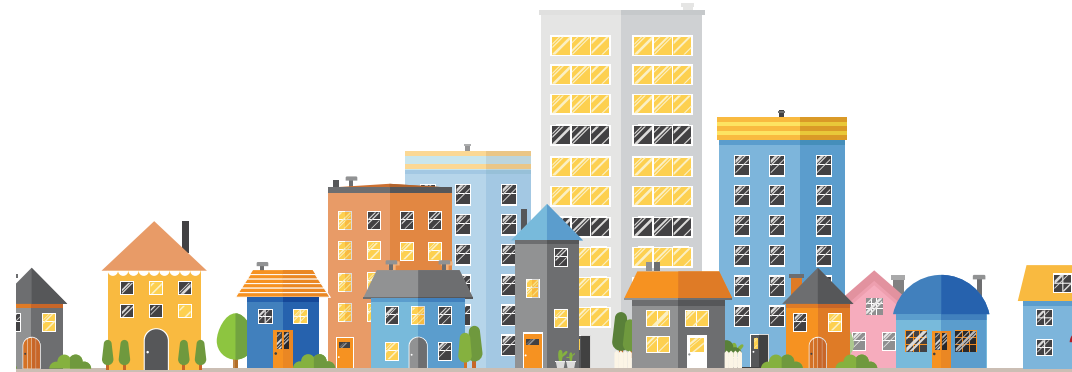
Edina - 2, 3:30 and 10 pm

Loring Park - 10 am

Children's programming is available up to age 5 for all services except 10 pm



# Won't You Be My Neighbor?



# Christmas at Wooddale

Arise! Your Light Has Come

Tickets are on sale now at [wooddale.tix.com](http://wooddale.tix.com)

Featuring the Wooddale Choir, orchestra, soloists and the Visser-Rowland pipe organ

Eden Prairie Worship Center

**December 8** at 8 pm and **December 9** at 2:30 and 5 pm

## This November



# Welcome to Wooddale Church!

## We're so glad you're here.

If this is your first visit, we have a gift to say thanks for being our guest today. Please fill out a Connection Card and take it to a volunteer in the common area as you leave the service. We'd love to meet you!

Our Connections Team is here to answer your questions and help guide you to your next step in getting to know our community. Look for volunteers wearing blue lanyards or stop by one of our **Welcome Centers**.

### What's Happening at Wooddale

For a full schedule of events and activities, please visit [wooddale.org/calendar](http://wooddale.org/calendar).



[lydiascoffee.com](http://lydiascoffee.com)

#### Eden Prairie

**MONDAY** 7 am - 2 pm, 4:30 - 7 pm

**TUESDAY** 7 am - 2 pm, 4:30 - 7 pm

**WEDNESDAY** 7 am - 2 pm, 4:30 - 8 pm

**THURSDAY** 7 am - 2 pm

**FRIDAY** Closed

**SATURDAY** 7 - 11 am, 4 - 7 pm

**SUNDAY** 7 am - 1 pm

Lydia's coffee is also available around service times at our Edina and Loring Park campuses.

### Need Prayer?

Volunteers are available to pray for you after each service. We invite you to come to the front to meet with a prayer team member.

You may also submit prayer requests and pray for others in our community at [wooddale.org/prayer](http://wooddale.org/prayer).

### Missed a Service?

If you weren't able to join us, you may view past sermons at [wooddale.org/sermon-archive](http://wooddale.org/sermon-archive).

You can worship through giving at [wooddale.org/give-online](http://wooddale.org/give-online).

### Get involved

Check out ways to get involved at [wooddale.org/get-involved](http://wooddale.org/get-involved).

For a list of job openings at Wooddale Church, go to [wooddale.org/employment](http://wooddale.org/employment).

## Saturday Traditional Service

### Carols and Community

Join us in Lydia's after the 5 pm service on December 1!



### Soup and Sing Along

Everyone is welcome to join us for a bowl of potluck soup and some favorite Christmas songs at our Edina campus on Sunday, December 2, from 11:45 am to 1 pm. If you're interested in bringing a pot of soup or helping at this event, [please email edina@wooddale.org](mailto:please_email_edina@wooddale.org).

### Serving the Elderly Through Microsites

Microsites provide an opportunity for those who cannot attend services at a Wooddale campus to experience a service in their own living facility. If you have a heart for the elderly, opportunities are available to help provide our weekly services to nearby senior living communities. [Learn more about starting a microsite or serving with one by emailing microsites@wooddale.org](#).

### Legacy Builders Christmas Luncheon

Join us for our Christmas Theater Luncheon on Friday, December 14, from noon to 2 pm at the Eden Prairie campus. Enjoy a delicious prime rib dinner followed by a delightful music-filled presentation of "A Misfit Christmas." [Tickets are on sale at wooddale.tix.com](#).

### Junior High Food and Football

Sometimes we just need to eat food and watch football—especially when the Vikings are playing the Packers! Bring a blanket or chair and be ready to cheer for your team this Sunday, November 25, from 7 to 10 pm at our Eden Prairie campus. Not a football fan? That's cool—you can hang with your friends and eat food. \$8 at the door.

*Light*  
How Christ becomes the  
True Light of the Season

*New series starting next weekend*

